

Preliminary Ethnographic Study of  
Pacific Community Church

by

Jim Heuving

A Term Paper

Presented to Professor Scott Frederickson

Luther Seminary

As a Requirement in

Course CL 7532

St. Paul, Minnesota

2010

## **Introduction to Pacific Community Church**

Pacific Community Church is located in Cloverdale, one of five distinct town centers in Surrey British Columbia. Surrey is the second largest city, next to Vancouver, in the Greater Metro Vancouver. Cloverdale is also adjacent to Langley City and Langley Township and is closer within a 2 mile radius than Surrey's other town centers. Langley City is primarily the commercial center of our local area and Langley Township, like Cloverdale, is primarily a residential community.

Let me start with a few demographic highlights gleaned about Pacific Community Church's location in Cloverdale. (The City of Surrey's very new website provides a remarkable amount of free data, resources and links). This early and preliminary ethnographic study should include more about the neighboring communities of Langley City and Langley Township but I will leave that exploration and research for the next stages of this study. Nonetheless, a quick review of some of the demographic data of Cloverdale begins to suggest the sort of community most immediate to its location (See Appendix 1).

- Cloverdale has the largest proportion of children six to fourteen years living at home relative to the other Surrey town centers.
- Home ownership rates in Cloverdale are 80%. Of the communities in Surrey, Cloverdale and South Surrey had the highest proportion of occupied private dwellings (70%).
- The average house age in Surrey is twenty years in contrast to Cloverdale where the average is the lowest at 14 years.

- Cloverdale is below the rest of Surrey in the share of its population that is without Canadian citizenship (4.6%)
- Surrey's immigrant population comprised more than 40% except in Cloverdale and South Surrey (24%; 18.8%).
- Cloverdale had the lowest rate of unemployment in Surrey at 3.9%.
- Cloverdale's educated mostly studied in BC (71%) compared to Surrey's other community centers (50-58%).
- Cloverdale and South Surrey unlike the other city centers have relatively high proportions of their population in the high income brackets and conversely less in the lower brackets.
- Cloverdale, relative to Surrey Communities, had the lowest prevalence of low income among children (11.7%) in comparison to Guildford (33%).
- Average income in Cloverdale is higher than all other communities in Surrey except for South Surrey. Relative to Metro Vancouver Surrey has the third lowest average income.

PCC's property is found at the end of an industrial cul-de-sac on 180th Street which runs perpendicular off of Highway 10--a key artery linking both Langley to the east and Surrey to the west (Check Appendix 1). Looking east and scanning south from the campus one looks upon the edge of the agriculture belt and on the further eastern edge of the valley the community of Langley. Immediately south of the property is the Canadian Pacific Railway whose locomotives and lengthy coal and wheat containers rumble our building as they make their last leg to the Pacific ports. Stretching beyond the rail line towards the Canada-USA border seven miles away are extensive blueberry, produce, herbal and hay fields. To the south-west and moving north-west just beyond the low lying green belt lie the rest of Surrey and the coast line that begins tracing the western border of Canada. To the south-west is the community of South Surrey and the smaller city of Whiterock. To the north-west are Surrey's other communities of Newton,

Guildford, Whalley, City Center and Fleetwood. Across the Fraser River to the northwest remain the cities of Greater Vancouver accessed through either a tunnel on Highway 99, the Alex Fraser on Highway 99, the Pattulo Bridge on King George Highway, or the Port Mann Bridge on Canada's Highway 1. From south to north Surrey is about 22 kilometers long and from east to west it is about 14 kilometers wide. Surrey's population is presently at 474,000 people with projections in 2021 to be 580,000 which outpaces and will outgrow the city of Vancouver.

Taking a quick walk north from Pacific on 180th Street will bring you immediately to two landmarks on Hwy 10 (See Appendix 3). On the west side is the Saddle and Tack shop at one time the largest in western Canada and a continuing reflection of the area's agricultural roots. Across the street to the immediate east is the new Kwantlen Polytechnic University that now trains and credentials skilled trades people and perhaps a reflection of a typically blue collar community. Continuing north up the hill on 180<sup>th</sup> you come to 60<sup>th</sup> Avenue on which stands Lord Tweedsmuir High School with a burgeoning 1600 students. The same hill is great for tobogganing with the boys and in the summer and at the bottom there is a great outdoor swimming pool—free! Making a right on 60th Avenue takes you down the hill you just climbed to a large recreational area which is home to the Great West Casino, Fraser Downs, Agri-plex, Cloverdale Hockey Arena, Cloverdale Rodeo, Cloverdale Amphitheater, Cloverdale Seniors Center, Cloverdale Curling Club, and Shannon Hall. Historically it is a cacophony of competing interests with properties separated by wired mesh fences staking their territory on the equivalent of almost 12 city blocks. Presently a large recreational center is being built to replace some of the dated buildings and to coordinate shared space

among the varied users. Among the key events of Cloverdale is the Cloverdale Rodeo, once the second largest rodeo next to the famous Calgary Stampede Rodeo, and the Blueberry festival which expands every year as a growing reflection of the ever expanding acres of new blueberry fields.

Turning south on 176 (Hwy 15 bypass which is the north-south route which links from the Canada-USA border to Highway 1) and then slipping onto 176A Street takes you into downtown Cloverdale which retains its historic western architecture. New commercial projects will be transforming the downtown as the western styled Cloverdale Mall is replaced and large box stores are built adjacent to the 176 bypass. Turning east on Highway 10 takes you past the old City Hall, the new Cloverdale Museum and down a busy mile strip of fast food restaurants, banks and retail outlets until you get back to the corner of 180th Street. The general impression is of an old town in the midst of an inevitable transformation where new developments contrast against the weathered architecture of the past.

### **Analysis of Site's history**

Pacific's warehouse facility mirrors a blue collar ethic of casualness and functionality (See Appendix 4). PCC purchased the 30 year old warehouse in 1998 and began worshipping in a big box auditorium in 2000 after renovating half the building. Since then further renovations were done to offices, roof and classrooms in separate cash only projects. A new \$100,000 building/renovation project is underway to increase seating by 50% by extending the sanctuary wall into a portion of the unfinished warehouse.

PCC started in 1991 as a Christian & Missionary Alliance church plant. The host church was the large Peace Portal Alliance (PPA) located in South Surrey. The church planter was Greg Schroeder who gathered a congregation out of PPA and launched a first service of 40 people in Cloverdale's Car Museum (John Lennon's yellow Cadillac was a weekly participant). Within a year the church moved to the newer Don Christian Recreation Center where attendance grew spectacularly and eventually required two services. Growth required a move to Martha Currie Elementary on 184th Street where the congregation grew for the next five years. This inspired a search for a more permanent location and thus securing the present warehouse (See Appendix 7 for a fuller history.)

Greg Schroeder was a skilled leader and preacher whose church strategy followed church-growth models of the 1990's. The worship was a fresh alternative with its contemporary expression and casual atmosphere and a relational focus through weekly small groups. Leadership structures were primarily centered upon the direction and relationships of the senior pastor. As a rule PCC avoided denominational structures and systems and braved establishing creative ways of leadership and life. It's fast and compelling growth in a predominately Caucasian culture grabbed denominational attention since successful church planting models among Caucasians were few, compared to the growth of Chinese Alliance churches. PCC's success leveraged an unsuspecting degree of freedom and confidence. Perhaps the growth of the Church, and the financial responsibilities of a new building, outpaced the development of structures and systems to support the demands and realities of the congregation. Early into the transition to the warehouse senior leadership shifted to Pastor Morris Mckenzie—a senior associate pastor from Canada's largest congregation at the time--Northview Community Church.

Leadership style was consistent with the past but ministry strategy became more “attractional” and seeker sensitive in terms of worship and large scale events modeled after some of the successful events at Northview (Pacific Launch and Christmas Theater). It was during the transition of senior leadership Pacific chose to become an “organized” church and began to embrace new governance structures consistent with the C&MA.

The shift in senior leadership commenced what some would call the “Great Sadness.” The season stretched five years and included the confusing transition of leadership, the moral failure of Greg Schroeder, an increasing toxic leadership culture, Morris’ resignation after two years of ministry, news of Morris’ unknown and ongoing relationship with the chair of the PCC Board, and the appointment of a transitional pastor who was responsible to help PCC navigate through crisis. Through the transitional season which ended with the launch of a senior pastor search was preceded by a season of intentional introspection, confession, new leadership practices and a greater diligence in terms of leadership accountability.

### **Analysis of membership, attendance, and demographics patterns**

PCC’s attendance experienced a constant climb through the first decade of its existence. Average attendance peaked around 630 and peak services reached near the 800’s. Attendance dropped substantially during the transitional season by 50% into the mid 330’s. The church has been typically youthful throughout the decade with the average age about 34 (if I remember correctly when we did a congregational survey in 2002) with few senior members. More recently with the ministry of Brian Buhler there has been a balanced shift as more seniors are attending and becoming members. Presently demographics suggest growth among young families, empty nesting families and retired

folks. Attendance is increasing incrementally and plans are to increase the size of the auditorium in 2011.

Although the attendance charts don't indicate a significant attendance climb the lack of seats, the use of overflow seating and a new trend in attendance in the quarter over other similar quarters indicates to us that we need to move the wall 30 feet.

Appendix 8 is a map that plots the 450 addresses of families currently active in our data base. Although a large group of families are located near to Cloverdale and Langley, pockets of concentration are located in the surrounding communities of South Surrey, South Langley, Panorama (Newton), Fleetwood and Walnut Grove. This suggests that Pacific is not simply a community shaped by the geographic boundaries of Cloverdale. Perhaps Pacific is less of a Parish and more of a destination church. It would be worth plotting the most active members, leaders and givers to visualize how the concentrations differ with the total database of attendees.

### **Analysis of financial data**

Pacific is a generous church. A fuller study would provide some more data about giving over and above general giving (building campaigns and special mission projects) but the two graphs in Appendix 6 will suffice to give an indication of Pacific's giving habits in relationship to general budget giving. The one significant drop in giving was a result of the "Great Sadness" and corresponds with the sharp drop in attendance. What is notable is that giving remained strong relative to the numbers of members and indicates a resilient community willing to persevere through a demanding and troubling season.

As we are noting a new trend in attendance we are also noting a potentially new trend in giving as this quarter's giving is pushing beyond our three year trend line as you

can see in Appendix 6. More research might reveal that more mature and financially resourced members are making Pacific their new church community.

### **Analysis of values, mission, and vision**

As a rule Pacific has been a community particularly motivated for evangelism. Christmas productions, Alpha courses, fashion shows, sermon series evidence its evangelistic pursuits. This was consistent with the tradition of the C&MA which emphasized church planting and missions as its core activities.

“Making friendships that count with God, each other and the people of the world” was the mission statement of PCC under the leadership of Greg Schroeder. Morris McKenzie altered the statement to “Passionately pursuing friendships that count with God each other and the people of the world.” During the transition PCC covered up the mission statement with a large orange hazard sign, “under construction.” With the ministry start of Brian Buhler PCC painted over the mission statement and has not replaced it with another. Instead a congregational process was initiated to establish a set of Distinctives to shape the ministries of the church’s identity.

The Distinctives (See Appendix 8) are particularly theological functioning as a means to recalibrate our ministries and to inspire discussion about our mission and outcomes pursued in ministry. They were initially crafted by the two senior leaders and underwent a process including the Board and congregation that resulted in these shared set of seven Distinctives. PCC has been determinedly slow to craft a new mission statement and yet senses that a season is approaching when it will perhaps be a valuable and necessary task to engage.

The existing Distinctives suggest a departure outside the traditional evangelical boundaries by embracing a broader recognition and appreciation of other Christian traditions and theological contributions. The Catholic Distinctive gives particular expression to that. The Sacramental Distinctive articulates Pacific's embrace of a new church practice still uncommon in the evangelical church. Perhaps true of all the existing distinctives is a move towards greater theological depth in terms of understanding the purpose of the church and the life of the Christian. It suggests a critique of some typical thinly cultivated theology common to evangelicalism and a pursuit to cultivate a more open dialogue which seeks to develop greater capacities to theologize as a community. Our adult education opportunities which we call "theological colloquiums" gives evidence along with our more expositional style of preaching (a move from topical) that we have great concern and desire to reconstruct and equip the congregation with more biblical/theological ability and content.

### **Analysis of site's primary symbols, rituals, or metaphors**

Three worship songs, announcements, prayer, sermon and final song was the typical structure of each Sunday's liturgy for most of Pacific's history. In the last two years the weekly Eucharist was added to the liturgy with more attention given to congregational prayers and song selections. The shift in liturgy has been warmly embraced and there is a significant appreciation of the practice of weekly communion.

Thomas H. Schattauer, in the book, *Inside Out: Worship in an Age of Mission*, delineates three kinds of worship. First is the conventional model of "inside and out" which assumes that liturgy is basically an insider experience to equip the insiders to be equipped for ministry on the outside. Second is the contemporary model of "outside in"

which seeks to bring the activities of the world into the place of worship and thus create a platform or stage to present the gospel or call people to social or political action. Third is the radically traditional model of “inside out” which seeks to undo the separation between God’s mission and liturgy assumed in the other two models. Instead the third model recognizes that the “the seemingly most internal of activities, the church’s worship, is ultimately directed outward to the world.” Applying Schattauer’s categories, Pacific could be described as a church that was planted to break out of the conventional to become contemporary but in the last couple of years has critiqued the contemporary approach and is exploring what it means to be radically traditional.

The building is not ornate and is very functional with upside in terms of 8000 square feet of unused space (See Appendix 2). The empty space has been used to facilitate a Cloverdale wide Hamper project, a Haiti collection project and space for our all congregation potlucks.

Our auditorium is in a temporary location ready to be economically taken down when the finished auditorium is completed in the future (who knows when). The auditorium stage, built upon a series of coordinated 4x8 modular boxes, presently creates a long and deep stage which is outlined by black stage curtains draped from ceiling to stage (See Appendix 4). Over thirty different pieces of stage lighting hang from the ceiling providing special lighting for weekly events. On the west facing wall is a lacquered 18 foot wooden cross—it is quite imposing in my humble opinion. Traditional style was injected into the contemporary with the addition of an antique wooden pulpit replacing the standard music stand and an antique wooden Eucharist table now sits in front of the stage.

The present sanctuary does not include any foyer space and most people enter the sanctuary immediately as they enter the west side doors.

Through the week the building and auditorium is used by a number of different groups and weekly church programs. One of the developing metaphors in the church is “extending the table.” We see the use of local community groups as an expression of us being hospitable and building relationships with community non-profit organizations.

### **Analysis of site’s web presence.**

Pacific is redoing their dated website but presently their website serves as a center for information. Although our website is dated and complicated to navigate, it nevertheless continues to be the primary administrative and communication center for what is happening at Pacific. People will find out where we are, what we are doing and who to contact. We know that most people check out our website before they come and visit a service. The images of a wheat field is not terribly contextual and the people’s faces are not of anyone from Pacific. But for the new person...how would they know?

My hunch is that the website is information heavy, challenging to navigate but indicates many things that are happening.

### **Analysis of the use of space.**

Presently the facility is being used at its fullest on Sunday mornings and has inspired a construction project as mentioned. There are about 80-100 children from six month olds to grade six who participate in children Sunday programming during the services. Throughout the week three community organizations use the building. On Wednesday morning a church program for women and preschoolers is hosted where over

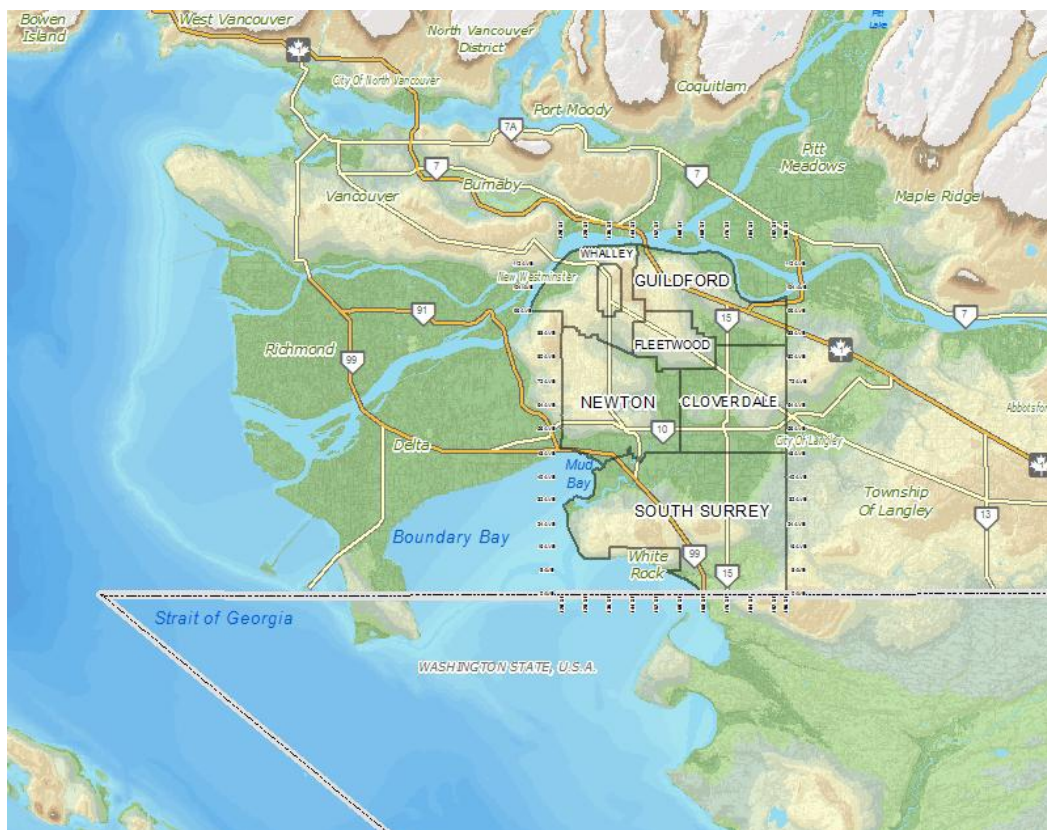
50 women attend. On Thursday nights youth programming happens with about 20 youth and 5-10 youth leaders.

The warehouse provides a very functional and roomy space to carry out programs. Given the six community partners that do programming at Pacific indicates that we are an attractive and hospitable place to do programming despite the fact that we are in a warehouse district. A sizeable parking lot accommodates the congregation adequately as we rarely ever have to use street parking. An unfinished warehouse creates all kinds of possibilities for ministry and of course great games of floor hockey (somebody should start a league).

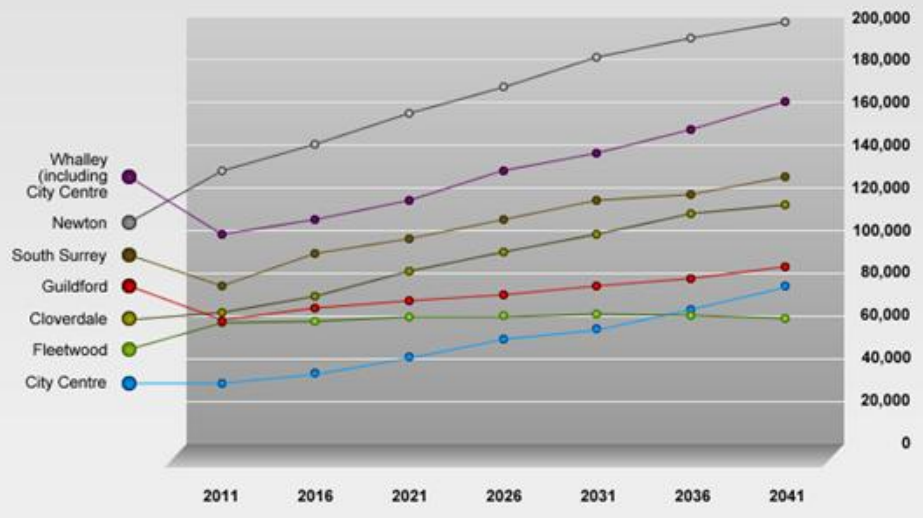
The building usage is becoming a community center of sorts and as explored in a previous term paper embraces our missional desire to extend ourselves and our resources to others in collaborative ways.

Much like the community of Cloverdale which is undergoing an urban transformation of sorts there is also at Pacific, but perhaps in the opposite direction, a traditional transformation of a once more contemporary alternative ministry. To use a baking metaphor, new and old ingredients are being poured into a mixing bowl and we are still in the mixing stage where the different ingredients are still identifiable and distinguishable. If God is watching and handling the mix I expect he up to something very good.

Appendix 1—Surrey Map and Assorted Demographics (copy and pastes) from Surrey City’s Website



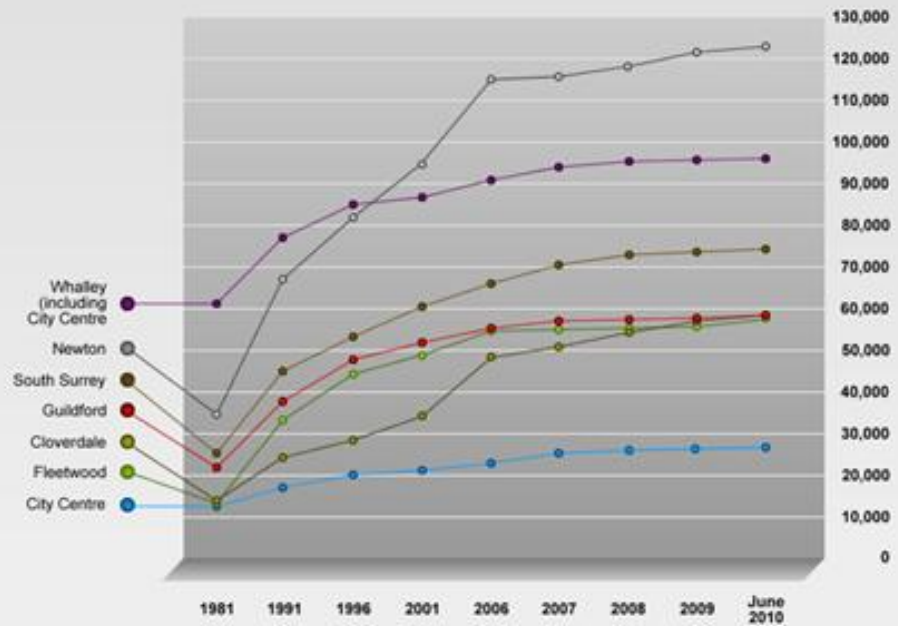
NEIGHBOURHOOD	2011	2016	2021	2026	2031	2036	2041
City Centre	28,620	34,250	41,750	48,940	55,830	62,910	75,250
Fleetwood	58,600	59,360	60,070	60,540	60,790	60,400	59,800
Cloverdale	61,500	71,510	81,770	91,770	99,890	107,100	113,710
Guildford	59,360	63,140	67,620	71,840	75,920	79,200	82,480
South Surrey	77,420	89,680	97,660	105,070	114,180	119,450	124,500
Newton	127,040	140,180	154,170	167,500	181,040	190,380	198,120
Whalley (including City Centre)	97,110	104,390	116,680	128,030	137,370	146,790	161,390
<b>Total</b>	<b>481,030</b>	<b>528,260</b>	<b>577,970</b>	<b>624,750</b>	<b>669,190</b>	<b>703,320</b>	<b>740,000</b>

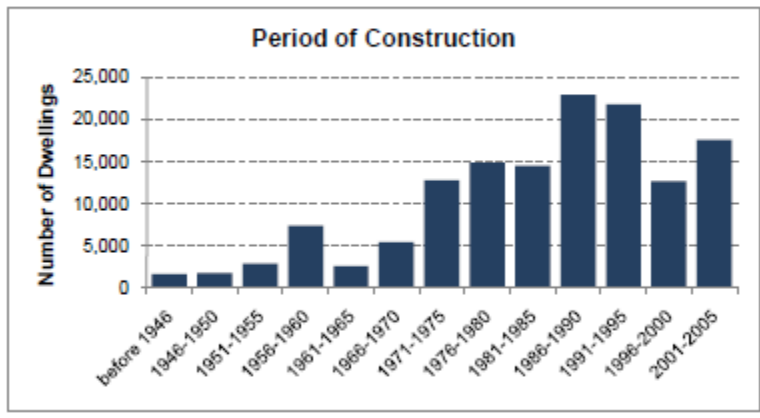


Notes:

## Population Estimates

NEIGHBOURHOOD	1981	1991	1996	2001	2006	2007	2008	2009	June 2010
City Centre	12,720	17,430	20,910	21,320	23,200	26,340	27,650	27,710	27,970
Fleetwood	13,880	33,250	44,000	49,110	56,200	56,990	57,480	57,830	58,260
Cloverdale	14,750	24,320	29,340	34,760	49,120	52,320	55,370	57,850	59,480
Guildford	22,950	38,430	48,970	52,450	67,450	68,230	68,490	68,550	68,670
South Surrey	26,710	46,690	53,670	60,340	67,950	70,460	73,430	74,330	75,600
Newton	35,800	68,530	82,880	95,500	115,180	116,730	119,330	121,300	123,270
Whalley (including City Centre)	61,050	77,650	85,380	87,600	91,220	94,800	96,210	96,340	96,720
<b>Total</b>	<b>175,140</b>	<b>288,870</b>	<b>344,240</b>	<b>379,760</b>	<b>437,210</b>	<b>449,530</b>	<b>460,310</b>	<b>466,200</b>	<b>472,000</b>

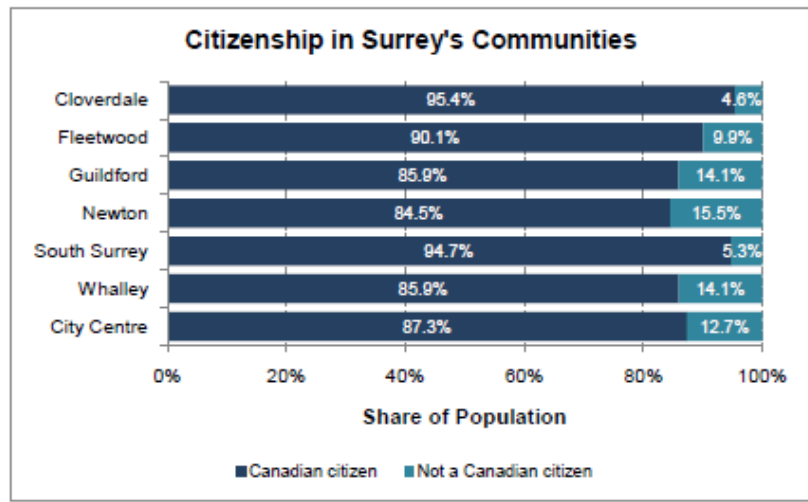




Source: BC Assessment Authority, City of Surrey Planning Department

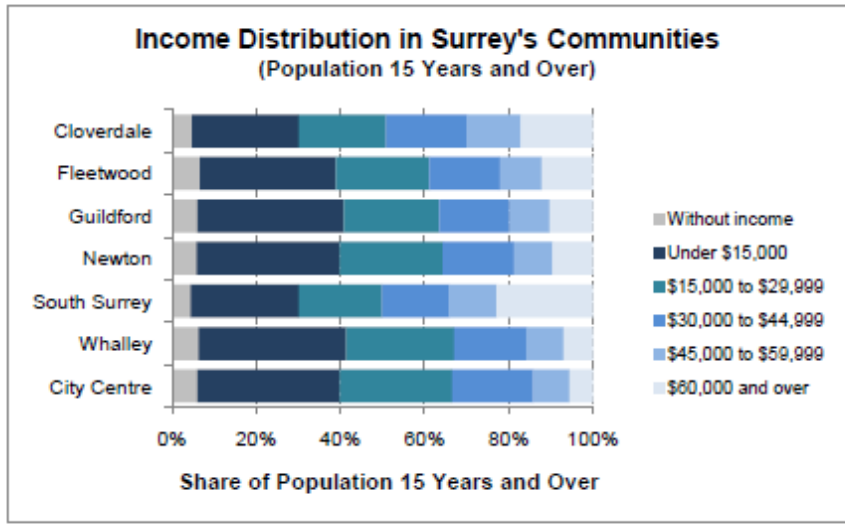
### Citizenship in Surrey's Communities

The share of the population without Canadian citizenship in Surrey's communities ranged from 4.6% in Cloverdale to 15.5% in Newton. In addition to Cloverdale, South Surrey (5.3%) is considerably below the rest of Surrey in the share of its population that is without Canadian citizenship.



### Total Personal Income in Surrey's Communities

There was some variation between the income distributions of Surrey's communities. In order to facilitate comparison income brackets were aggregated to form six simplified categories as seen in the following chart. From this it is evident that Cloverdale and South Surrey differ significantly from the other communities in the manner in which income is distributed among their populations. Both have relatively high proportions of their populations falling within the higher income brackets and relatively low proportions falling within the lower income brackets.



## Appendix 2—Church Pictures

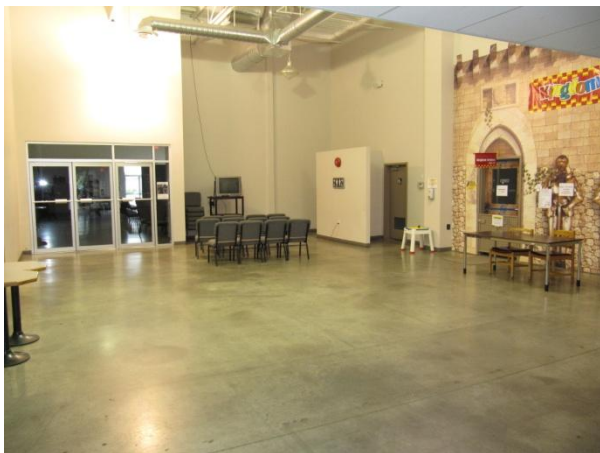


Figure 1: Church Foyer

This is the foyer that leads into the east entrance of the sanctuary



Figure 2: Church Sanctuary

This gives you a view from the back towards the front of the sanctuary. This is our temporary setting but we have been here for ten years already. We are now extending it another 30 feet to increase seating by 50%. Did you notice all the theatre lighting. There are over 30 lights and even a disco ball!



Figure 3: The Big Cross

The cross hangs prominently on the west wall of the sanctuary



Figure 4: Pulpit and Table

These are the two new pieces of furniture--a pulpit and a table. The lectern top is made from a baker's cookie table.



Figure 5: Unfinished Warehouse

The color is off but this is a picture of the unfinished part of the warehouse.

## Appendix 3—Just a Few Pictures of Cloverdale



Figure 6: Stampede and Tack Shop

Can't miss the sign when we turn onto 180<sup>th</sup> and make your way to Pacific..



Figure 7: Kwantlen Polytechnic Univ.

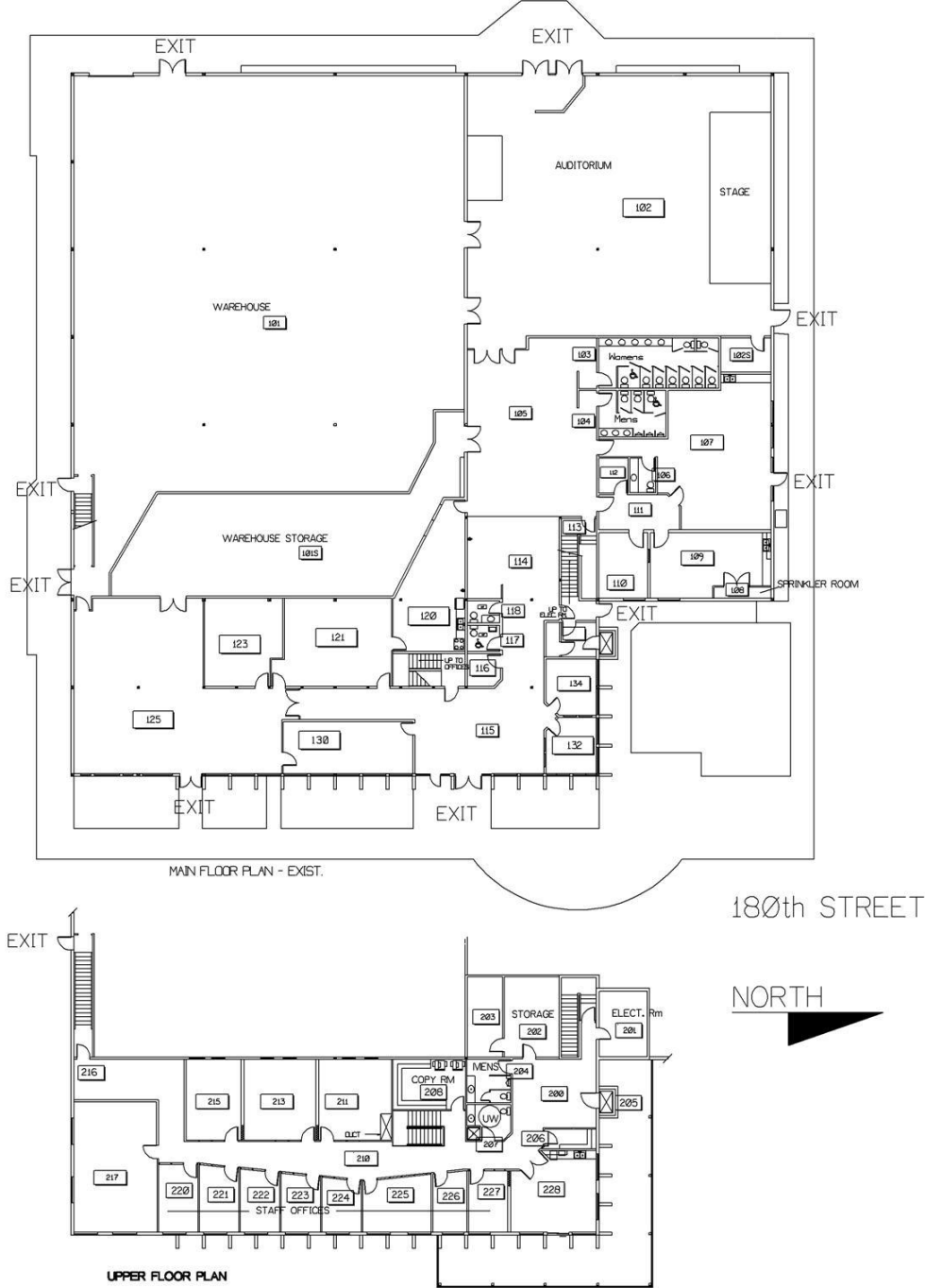
Can't miss this sign either. The campus is three years old and its university status only a year. It is a bit of statement as blue collars make their case for academic credibility.



Downtown you won't find horses but you can certainly imagine it as the buildings follow a western style. Across the Street is the Cloverdale Theater, the first in Surrey, and you can bring your own bowl and get free popcorn. Cloverdale might be getting city'ish but it still has that country community feel.

### Appendix 4—Building Layout

#### PACIFIC COMMUNITY CHURCH



K:\File Storage\CADD\PCC\Existing Lock-up Plan - 10-0308.gxd -- 03/08/2010 -- 10:38 PM -- Scale 1 : 350

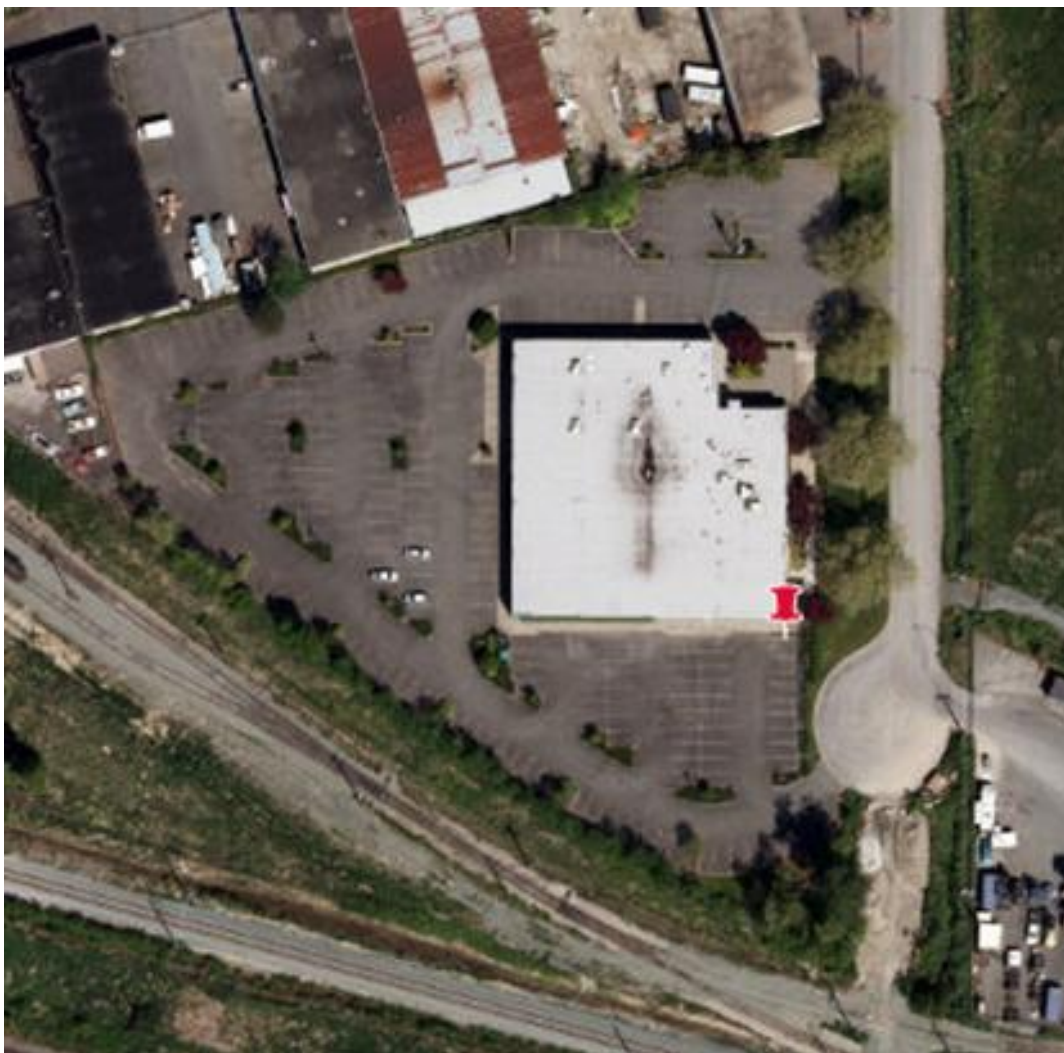


Figure 8: PCC's Trinitarian Property Line



Figure 9: PCC Front Entrance

9:44 PM

**Property Information Report**  
**5337 180 ST**

Ref Date: 11/15/2010

<p><b>Property Details</b>  <b>PID:</b> 001-983-521  <b>Property Number:</b> 197356  <b>Folio:</b> 8053-08001-7  <b>Lot:</b> 9  <b>Legal:</b> LT 9 SEC 5 TWP 8 PL 10274 NWD  <b>Plan Number:</b> 10274  <b>Lot Size:</b> 3.076 ACRES (12947.37 SQUARE METRES)</p>	
---	--

**Zoning Details**

Zone	Description	Land Use Code	Bylaw 1	Bylaw 2	Bylaw 3	Bylaw 4
CD	Comprehensive Development Zone		B/L 13834			

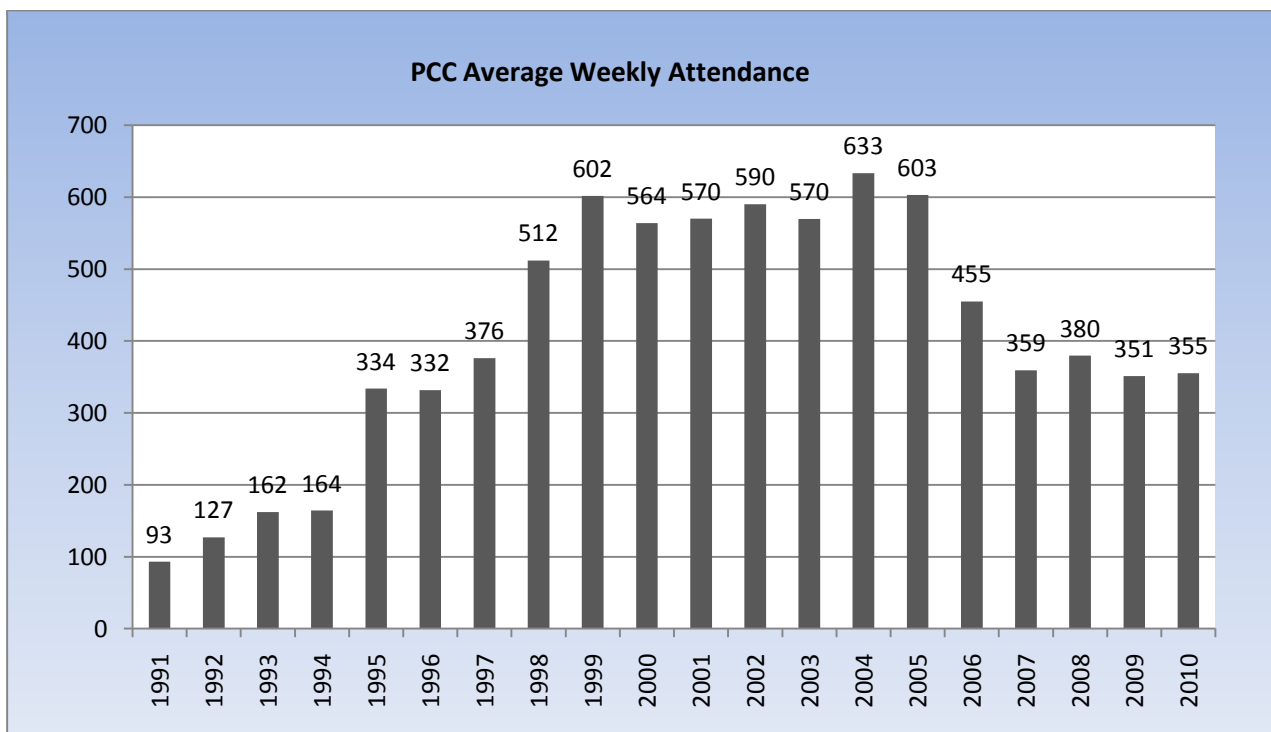
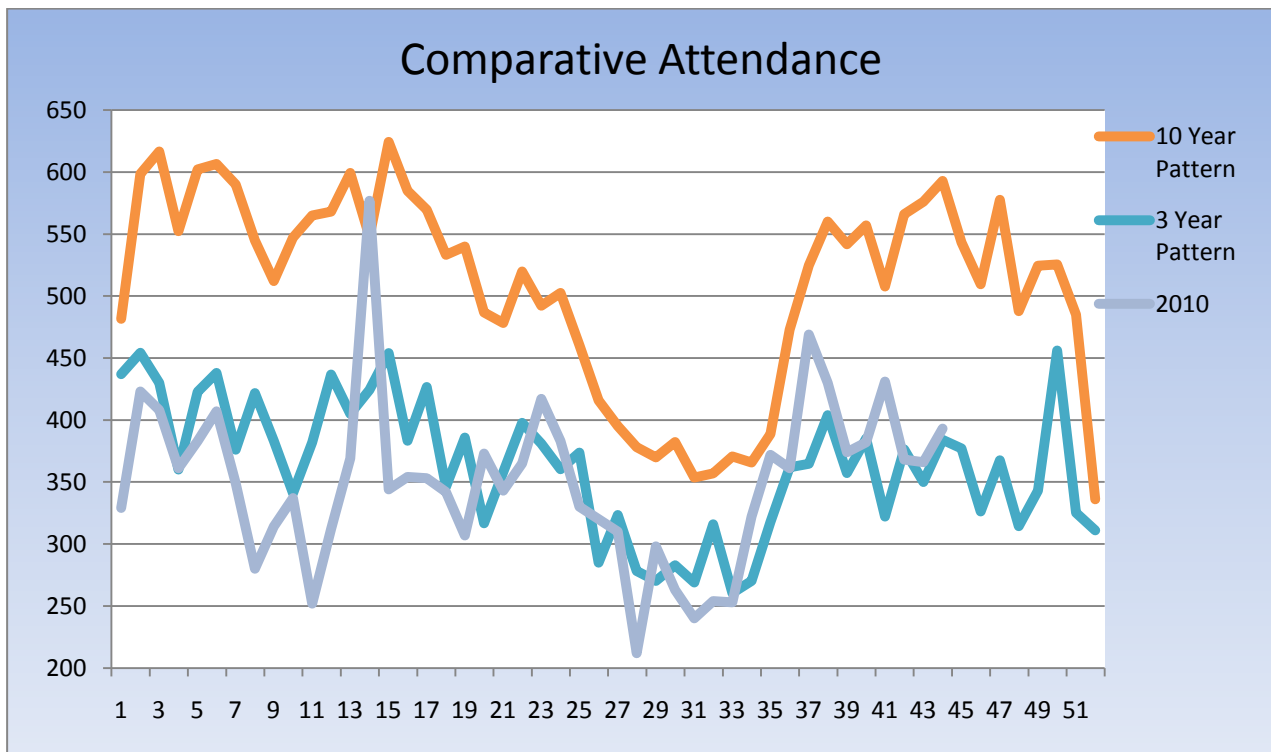
**Assessment Details**

Year	Gross Land	Gross Improvements	Gross Assessment
2010	\$2,460,000	\$360,000	\$2,820,000

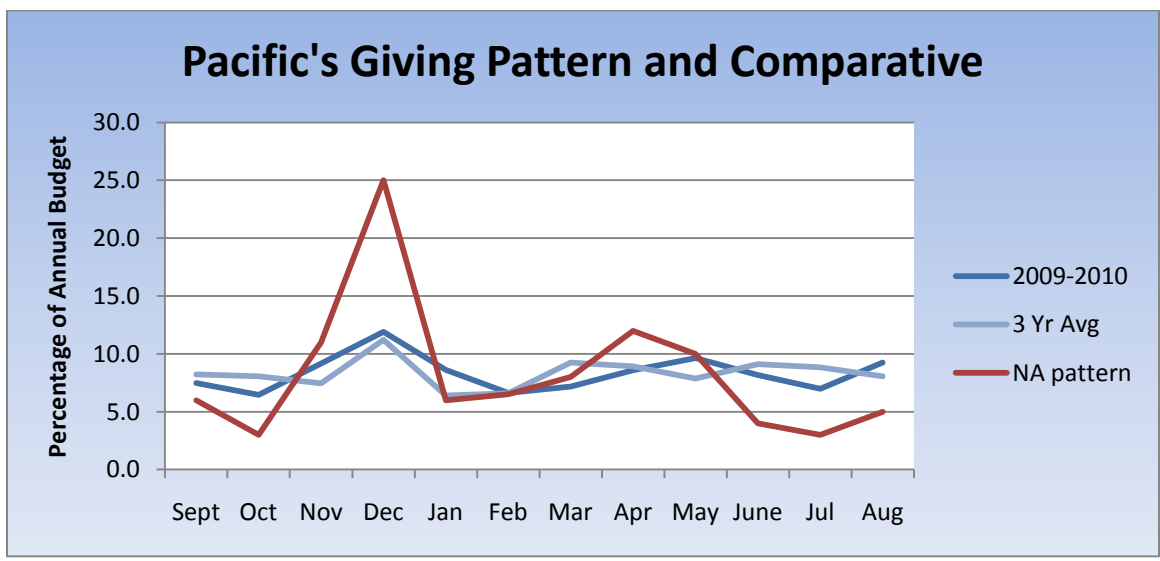
**Utility Details**

Service	Start Date	End Date
METERED SEWER - NON-RESIDENTIAL	01 Jan 2003	
METERED WATER - NON-RES BASE 075MM	01 Jan 2005	
METERED WATER - NON-RESIDENTIAL	01 Jan 2003	
METERED WATER - NON-RESIDENTIAL BASE	01 Jan 2003	31 Dec 2004

Appendix 5—Attendance Analysis



Appendix 6—Financial Graphs



## Appendix 7—PCC History

## The PCC Story

### An Account by Jim Heuving (Dec 2006)

*Five hundred years ago the explorer Ferdinand Magellan set out to be the first person to circumnavigate the globe. When he rounded what we now know as Magellan's Strait he entered the largest body of water on earth. He named it—PACIFIC, the peaceful sea—in Latin "mare pacificum." Fortunately for Magellan, he experienced the quiet waters of this vast ocean. For many, it is not uncommon to experience tropical storms and tsunamis capable of destroying islands and entire coastal towns—let alone throwing your ship around like driftwood.*



Considering that the overarching purpose of God's plan is peace in this world, the name of our church, Pacific Community, does not reflect something the size of an air filled dinghy. Peace is what God pursues for all of us, for all of humanity and for all of creation. It is also what God calls his people to pursue. Though the goal is glorious, the challenge and trials of pursuing peace in Cloverdale has come with its storms, quakes, retreats and heartaches. Jesus' life and the history of God's people underscores that the pursuit of peace is usually amidst the smoke and bombast of battle.

#### Two of the early PCC leadership slogans:

"Making friendships that count with God, each other and the people of the world."

"We don't want to be a church of ten thousand but a church of thousands of tens."

Starting a church is not for the faint of heart (the same is true for remaining a genuine Church). Our church set sail in 1991 with great expectations and great enthusiasm. We wanted to be a community where true friendships with a purpose are cultivated and experienced. We wanted to experience something akin to the early Christian community in Acts 2 and, just like the early church, we wanted to send out many from here to around the world. One of our slogans was "not to be a church of tens of thousands but a church of thousands of tens." That slogan captured how we envisioned the look and feel of our community. We didn't want to create a community of individuals but a community of close groups where we could care for each other, serve each other, and together encourage each other, grow together, laugh together... to be the church together. We were compelled by the fact that, among the many physical needs that can be met in our world today, there is one real need often left unnoticed or not pursued — a loving devotion for each other—friendship. *"If I give all I possess to the poor and surrender my body to the flames, but have not love, I gain nothing."* (1 Corinthians 13:3).

Our early years were marked by growth and excitement as people found a church that was relevant to everyday life yet "edgy" enough to be fresh, fascinating, and fun. Pacific started when Church Planter Greg Schroeder and his wife Jill, along with about 40 others from Peace Portal Alliance Church, organized the first celebration service beside John Lennon's Yellow Rolls Royce at Cloverdale's late Car Museum (The Rolls is now on display in the main foyer at the Royal Victoria Museum). Through the years of early growth, PCC rented

#### The Different Locations of Pacific:

Cloverdale Car Museum (Now the Cloverdale Antique Mall)

Cloverdale Recreation Center (184<sup>th</sup> Street)

Sunrise Bar and Restaurant (Tuesday Evening Services)

Martha Currie Elementary (184<sup>th</sup> Street)

Warehouse on 180<sup>th</sup>

space from the school board, Sunrise Bar and Restaurant, and Surrey Parks and Rec. We were wandering nomads in the promised land of Cloverdale. Living without available ministry space and with limited office space, however, compelled PCC to form vital relationships among friends and neighbors in our homes. On almost any given day of the week there were groups of ten or twelve people meeting in someone's home to grow in relationship to God, each other, and the people of the world. We called them **Friendship Circles**. Pacific was convinced that the strength of the larger church is found in these intimate and purposeful small groups. They shape the heart and soul of our life together.

Eventually our Celebration Services outgrew most Cloverdale venues. As our friendships expanded and more and more people called Pacific home, we required more space to be together. One of our core beliefs was that as we increased the number of caring leaders who cared for others, God would add to our numbers. So it was. For instance, one year the leadership core grew by 15% and the church responded in the same year by growing 15%. As the church cared, more people cared to come. Of course this constant growth meant finding more space. One day our administrator, Koos Reineking, found a 35 year old, 27,500 square foot warehouse for sale at the end of an industrial Cul-de-Sac. One thing led to another and it seemed right to all. Enthusiasm grew and the church community rallied to raise the \$700,000 down payment while our denominational family loaned us enough to make the purchase final.

A church without a building becoming a church with a building was like sailing into unknown waters. We were like naive young adults stepping into huge responsibilities. We entered into a new season of life where the playful freedom of few possessions shifted to the growing responsibilities of ownership and all the burdens and expanded opportunities it brings.

"Since moving into the **Warehouse** every stage of renovation has been completed in cash while at the same time reducing our indebtedness."  
(Dean Cooper, Executive Pastor)

\$821,000 down payment to purchase Warehouse (2001)  
(700,000 + 121,000 accumulated building fund)

\$100,000 Seismic Upgrade (2002)

\$430,000 Temporary worship space, classrooms and temporary office & classroom space (2003)

\$400,000 Upstairs Office & Classroom completion, downstairs upgrades (2005)

\$140,000 roof replacement (2006)

### Pastoral Staff Past & Present

**Greg Schroeder** (Senior Pastor 91-02)  
**Blair Bates** (Youth Pastor 94-96)  
**Bob Rose** (Pastor of Administration 96-02)  
**Barry & Janet Collick** (Marriage Builders 97-99)  
**Aaron Harvey** (Worship Leader 98-00)  
**Lisa Warnock** (Children's Director 98-02)  
**Koos Reineking** (Finance and Administration 98-00)  
**Josh Peters** (Youth Director 00-02)  
**Jim Heuving** (Associate Pastor 01-present)  
**Ken McKenzie** (Administrator 01-02)  
**Bob Shafford** (Worship Leader 01-05)  
**Morris McKenzie** (Senior Pastor 02-05)  
**Dean Cooper** (Executive Pastor 03-present)  
**Evie Sandison** (Children's Director 02-05)  
**Dianna Fast** (Youth Pastor 03-05)  
**David Herrod** (Worship Pastor 05-present)  
**Kimberly Forrester** (Youth Pastor 05-present)  
**Christy Bayne** (Children's Director 06-present)  
**Gerry Teichrob** (Transitional Pastor 06-present)

Navigating uncharted waters exposed our weaknesses. We were at the mercy of our own best ideas and personal navigating tools. You could say our speedy little ship wasn't as sea worthy as we thought it was. Weighed on the scales of new challenges, we were found a little wanting. Perhaps we were a bit over confident and didn't trust the advice and insights of others. Nevertheless, the new season put a surprising strain upon our relationships and caused an unsuspected crisis of identity. Despite the fact that "relationships" were our prime directive from the day PCC started, the reality of an ongoing building project consumed the time, demands and resources of our leadership and community. As we dealt with all the trials and difficulties as they came to us, we often thought

the stormy weather would soon be behind us. So we were surprised as the storms intensified and the depth of the swells deepened.

*When Magellan and his five ships neared the southern tip of South America, one of his five ships shipwrecked while edging toward the breakthrough. Just as they pressed into the new-found way another of his ships, fearing the dangers and uncertainties, slipped away unnoticed and sailed back home. For thirty-eight rigorous days, the three remaining ships piloted their way through what is today known as Magellan's Strait.*

### PCC Leadership Team

#### Early Years 1991+ (Team of Advisors)

Rob Carmichael  
Neil Klassen  
Grant Ohman  
Laura O'Reilly  
Roger Schoeber  
Bob Shafford  
Ray Shareski  
Russell Wood

#### Middle Years 1994 + (Advisory Board)

Linda Harvey (97-03)  
Cam Huth (00-06)  
Gord Klassen (00-04)  
Donna Shareski (01-05)  
Dan Evans (01-04)  
Tim Dewick (02-04)  
Mark Funk (02-04)  
Dan Johnson (03-05)  
Ken McLellan (04-05)  
Byron Fast (04-06)  
Paul Oddsson (04-06)

#### Now 2005+ (Board of Elders)

Glen Forrester (05-08)  
Pete Den Haan (06-09)  
Tom Watson (06-09)  
Barry Petrunia (06-08)  
David Glassfetter (06-08)  
Ralph Hardy (06-07)  
Bill Tatum (06-07)

In our voyage we are passing through what might be a similar breakthrough point. Up to this time, the wind has filled our sails. Passing through this point and engaging the future will test our integrity and strength. Pressing forward, one will often encounter harsh seas, strong currents and stormy weather.

In a community where genuine relationships are the number one priority, it was disheartening to be part of a season where the mounting toll of friendship casualties replaced the vitality of healthy friendships. In a span of three years, two consecutive senior pastors, who had led our church to many very credible successes, fell from grace. Their lifestyle choices departed from their expressed desires to trust and follow God. But, the challenges we faced were not isolated to the two senior leaders. The existing board leadership recognized there were underlying behaviors and values that weakened the integrity of our community. These weaknesses, combined with two big guns misfiring on deck, almost resulted in a Pacific shipwreck. For many of us, it became evident that the tragedy of friendly fire can be more severe than the consequences of a surprise enemy attack. The end result of these two consecutive explosions within a short span of time required that we be towed back to the shipyard for repairs and to restore the integrity of our listing church community.

As Pacific humbly responded to the honest realities, many in the church and among the leadership team chose to come to terms with their own weaknesses. Instead of pointing blame on just a few individuals, the leadership of Pacific underwent a thorough review of its past and humbly admitted how it had failed to maintain a healthy Christian community dependent on God alone. On November 26, 2006 the Board of Elders sought the forgiveness of the church members, neighboring churches and God

himself. We declared that day a **Jubilee** in order to mark our passage through the straits from weaknesses and failures of our past to new seas and to claim our future of passionately following God's ways.

If you are a person who loves to explore the high seas, patience in the shipyard can be painfully difficult. But it is not without purpose. Who wants to risk the high seas only to sink to the bottom in an everyday storm? Pacific is preparing to sail strong again. Many of the values and strengths of the past that have

### Jubilee: Biblical Background

Leviticus 25:9: Every fifty years was to be announced a Jubilee year where all properties sold or traded were returned to the original owners.

"The year of Jubilee foreshadows the restoration of all that has been perverted by sin, the establishment of true liberty of the children of God, and the deliverance of creation from the bondage of corruption to which it has been subjected on account of human depravity." (Luke 4:17-21; Romans 8:19-23) ISBE

shaped Pacific still remain but added is an awakened sense of the dangers of the open seas and a leadership structure that will add integrity to the strength of Pacific Community. Facing unknown storms with confidence and sailing uncharted waters with skill comes from a sea-worthy ship and the wise lessons of past adventures and experiences.

It is time to set sail again. A ship is built, or rebuilt, to leave the harbor behind and to go out to sea. A great theologian of the past said, "A ship in harbor is safe, but that is not what ships are built for."

*When Magellan set out from Spain on September 8, 1519 his goal was singular—to be the first human being to circumnavigate the globe. The pursuit of that great enterprise required adventurous explorers, sailors, and crew willing to risk their lives, to leave behind what is comfortable and to dare the uncertainties of the future.*

**Missions—some of ours who are serving beyond**

**Camie Clark**—Kinshasa, Congo

**Cam Huth**—Empower Ministries

**Jim Sawatzky**—French African Radio

**Joyce Trainer**—Haiti

**Krista Wagonhoffer**—Kosovo

*Magellan must have had some ability to inspire his crew. Although Magellan didn't make it to his goal, his ship did. He died an untimely death in the Philippines. Of the 270 Spaniards and five ships that set sail, only 19 of the original sailors and one ship completed the circumnavigation. One ship mutinied, one shipwrecked, one burned and was left behind, another was captured by the enemy, but the ship Victoria persevered and sailed on. It returned to*

*home port three years later, almost to the day, on September 22, 1522. Each sailor contributed in the way he could, at the time he could. The world hasn't been the same since.*

The Victoria was not a cruise ship nor did it experience a cruise. It was a battleship that successfully completed its mission. Likewise it is important to realize that Pacific did not set out to be a "luxury liner" church offering all the delicacies the world can offer. We are a fully armored battle ship engaged in the challenging pursuit of peace, exploring uncharted realities, reclaiming lost territory and persevering till the job is done.

*"Though we live in the world, we do not wage war as the world does. The weapons we fight with are not the weapons of the world. On the contrary, they have divine power to demolish strongholds...taking captive every thought to make it obedient to Christ." 2 Corinthians 10: 1-6*

So it is for those who began the story of Pacific and for each one who chooses to carry on. Our God given task will not be done until God's plan of peace is complete. Who knows when that great day will arrive. Until then we hoist the sails. We leave behind what lies behind, not forgetting the past, but not letting it discourage our resolve and our mission. We proudly fly our

**Ministries Launched**

**First Five Years**

Children's Ministry  
Youth Ministry  
Women's Craft Night (1992-4)

**Middle Five Years**

Alpha (2001)  
College & Career  
Freedom to Serve  
Marriage Builders (1998-2001)  
Stephen's Ministry

**Last Five Years**

Help Fund (2002)  
Missions Team (2002)  
Warehouse 180 (2002)  
Kidz Kingdom (2003)  
College & Career (2003)  
Renovation (2005)  
Spring Spectacular (2003)  
Pacific Community Theater (2003)  
TnT--Twenties & Thirties (2003)  
Heart for Haiti (2004)  
AM Connections (2004)  
PM Connections (2004)  
Good Sense Ministry (2004)  
Men's Ministry (2004)  
Clover Valley Family Resource Place (2004)  
Sports @ Pacific (2004)  
Helping Hands (2005)  
Marriage Matters (2006)  
Christmas Hampers (2006)  
Sunshine Baskets (2006)

colours and go where God's grace needs to go. It is our expectation that we will reach the goal—Peace with God; Peace with each other; and Peace with God's creation.

**“...being confident of this, that he who began a good work in you will carry it on to completion until the day of Christ Jesus.” (Philippians 1:6)**

### **Statement of Confession and Repentance by the Board of Elders of PCC (digest)**

"There are some things in our past that need to be humbly and honestly addressed which have not contributed to the health of the church....we are deeply saddened and very sorry for all the hurt and confusion that has occurred in recent years at PCC. We repent and we humbly ask God and the church as a whole for their forgiveness."

From this day forward, and in total dependence on God, we seek to pursue Christ-like leadership by:

- Humbly and wholeheartedly pursuing God's best ways for leadership...
- Developing a healthier and more biblical community of accountable servant-leadership.
- Creating a safe and healthy Christ centered community where the spiritual gifts of each person will be free to be expressed with purpose and celebration.

#### **We claim God's promise to us from Psalm 67:**

May God be gracious to us and bless us and make his face shine upon us; May your ways be known on the earth, your salvation among all nations. May the peoples praise you, O God, may all the peoples praise you. Then the land will yield its harvest, and God, our God will bless us. God will bless us and all the ends of the earth will fear him.

## **Historical Highlights**

### **1991-1994 New Church Sets Sail**

**1991**--Greg & Jill Schroeder gather church planting crew from among members at Peace Portal Alliance.

**1991 September 8**-- First Celebration Service of PCC located at the Cloverdale Car Museum (Now the Antique Mall).

**1991-4**--Attendance climbed from an initial group of 40 to 166 in 1994

**1994**--PCC gathered in the Surrey Parks and Recreation building on 184<sup>th</sup> St..

### **Staff Team Members**

#### **Head Quarters**

**Barbara Litz** (Secretary 92)

**Janet Davis** (Secretary 91-92)

**Val Evans** (Admin Assistant & Worship Coordinator 96-03)

**Pam Hamilton** (Bookkeeper 91-98)

**Tracy Cudmore** (Bookkeeper 98-present)

**Monica Heuvig** (Admin Assistant 01-02)

**Danielle Petkau** (Admin Assistant 02-05)

**Patti Banfield** (Secretary 04)

**Jennifer Dykstra** (Admin Assistant 04-05)

**Sarah Cudmore** (Admin Assistant 05-present)

#### **Facilities**

**Jim Golightly** (Custodian 02)

**Ken Malkoske** (Custodian 02-04)

**Laurie Fehr** (Custodian 05-06)

#### **Ministry**

**Allan Goddard** (Sound 95-03)

**Darlene Westen** (Freedom to Serve 96-97)

**Glendine Skagen** (Worship Coordinator 96)

**Monica Heuvig** (Worship Coordinator 01-02)

**Danielle Petkau** (Worship Coordinator 03-05)

**Michelle Harrison** (Worship Coordinator 05-06)

## 1995-1998 Catching Wind

**1995**—The church’s attendance grew the most dramatically from 166 to 330 (100% growth).

**1995**--PCC moves to Martha Currie School Gym on 184<sup>th</sup> Street to accommodate growth to 2 services.

**1996**--Staff is expanded to include Bob Rose as Executive Pastor to facilitate growth by implementing functional structures. Staff size increases to an equivalent of 5.7 full time employees.

**1996**--Senior Pastor Greg Schroeder is diagnosed and treated for Thyroid Cancer.

**1997**--Church grows 40% in one year to 531.

## 1999-2004 Uncharted Seas

**1999**--Attendance climbs to 593.

**1999**--PCC purchases 35 year old, 27,500 square foot warehouse for \$1,735,000 in South Cloverdale’s Industrial Zone. Church rallies in six weeks to raise \$700,000 cash for required down payment. City of Surrey approves change in zoning to allow purchase.

**2000**--Seismic upgrade of the new building as the first step to retrofit warehouse for celebration services and offices.

**2000**--Michael and Rosemary Green from England (Christian scholar and author, evangelist and Professor at Wycliffe College, Oxford) and previous faculty member at Regent College (Vancouver) joins staff for six month term to train in evangelism and small group life.

**2001**--PCC raises \$430,000 (**430 seat campaign**) to start renovations on new building.

**2002 January**--PCC celebrates its first service in renovated Warehouse.

**2002**--First Annual **Pacific Christmas Theater** (PCT 2002) where over 800 people attend.

**2003 January**--Senior Pastor transition from Greg Schroeder to Morris Mckenzie.

**2003 May**--Pacific sets out on first Haiti Mission’s Trip.

**2003 June**--178 Charter members of Pacific choose to become an organized congregation of the Christian & Missionary Alliance Denomination. Pacific up to this point had been an “Unorganized Alliance Church.”

**Shipwright**—a craftsmen who builds boats. PCC's facility exists because of the generous and skilled hands that built it. Some of those who led us in transforming our warehouse:

**Gord Klassen**—architect (2000-05)

**Tim Dewick** Construction Manager – during the Renovation of Warehouse into Auditorium and Church Facilities (2001-2)

**Ian Mankey**—Construction Manager of the second floor renovation and bottom floor upgrades (2004-2005)

**Ray Shareski**—Construction Manager of the roof replacement (2006)

## 2005-2006 Shipwreck to Shipyard

**2005 Summer**--Second floor of Warehouse renovated with new offices and classrooms and downstairs offices renovated into classroom and more foyer space.

**2005 October**--Morris Mckenzie resigns to take position in Abbotsford.

**2005 November**--Remaining church staff and elders rally to provide leadership during season of pastoral search and transition.

**2006 Easter**--Leadership fallout as news of moral failure by our previous pastor undermines existing strength of leadership at PCC. The Senior Pastor Search process is put on hold and the Board of Elders decides to deal decisively with its past in order to once again press forward in strength.

**2006 June**--Board of Elders invites Allan Simpson of "Deeper Waters" to facilitate extensive assessment process.

**2006 June**--Board of Elders invites Gerry Teichrob to join staff as Transitional pastoral leader to implement recommendations of assessment and build core strength of leadership at PCC and guide us in a healthy pursuit of the next Senior Pastor.

**2006 Summer**--Formed Core Leadership Team of existing Board of Elders members, newly voted members of the Congregation and Senior Staff to address areas of concern, implement changes and pursue a closure process which culminated in a Board of Elders statement of confession and repentance.

**2006 Summer**—Leaky warehouse roof replaced.

**2006 November 26**—A Jubilee event concludes an extensive Closure Process where all those hurt or harboring concerns about PCC could address them and seek personal closure.

**2006 December**--AGM selects new members for the Board of Elders: Peter Den Haan, David Glasstetter, Ralph Hardy, Barry Petrunia, Bill Tatum, and Tom Watson. Glen Forrester was the single elder continuing from the previous Board of Elders to round out the new Board of Elders.

## 2007 Ready to set Sail

### Mission Giving

Supporting and aiding other churches around the world is a big part of what we want to be.

2005	\$65,000
2006	\$100,000

### Help Fund Giving

Ready to aid the immediate needs of those around us is not just what we want to do but what we must do.

2003	\$15,000
2004	\$17,380
2005	\$22,472
2006	\$17,705

### Numbers over the years

	Budget	Average Attendance
<b>1991</b>	71,000	93
<b>1992</b>	140,000	127
<b>1993</b>	140,000	162
<b>1994</b>	150,000	166
<b>1995</b>	220,000	330
<b>1996</b>	290,000	376
<b>1997</b>	363,000	531
<b>1998</b>	410,000	542
<b>1999</b>	506,000 + 700,000 building down payment	593
<b>2000</b>	396,000	573
<b>2001</b>	406,000	570
<b>2002</b>	522,000	581
<b>2003</b>	631,000	606
<b>2004</b>	611,000	632
<b>2005</b>	680,000	617
<b>2006</b>	615,000	461

## Appendix 8—Seven Distinctives

**A Gospel Community:** *We are a people committed to participating in the good news of God redeeming all creation through Jesus Christ.*

The gospel is everything God has done, is doing, and will do to redeem all creation for his glory. We are both recipients and participants in this unfolding drama of redemption. Our worship services and ministries are shaped by re-enacting this "good news" story and celebrating its centerpiece, Jesus Christ. Being Christ-centered implies that we embrace the cross of Christ as God's means of redeeming us from sin's penalty and sin's hold through the power of the Holy Spirit. Through the consistent exposition and application of the Scriptures, we are progressively transformed into a people who follow Jesus, seek his kingdom, and reflect his glory to the nations.

**A Missional Community:** *We are a people in mission seeking to effectively testify to the Good News in our neighbourhoods and the nations of the world.*

God is on a mission--as the Father sent His Son, so Jesus is now sending us, empowering us by His indwelling Holy Spirit. As "sent ones" we are to be the embodiment of the Living Word in human culture and social settings so as to display His divine nature and transforming power. We seek to engage the culture both locally and abroad declaring and demonstrating the gospel within the specific context of time, place, language, and culture. We seek to radically identify with the world while maintaining a radical distinction from it.

**A Trinitarian Community:** *We are a people who desire our relationships to reflect the community of our three-in-one God.*

By looking at Jesus, we will clearly see him in relationship with the Father and the Holy Spirit. As we are drawn into the fellowship of the Trinity, our earthly relationships with one another will begin to reflect our understanding of the Trinitarian nature of God, not our own relational needs and desires. We long to reflect the relationship within the Trinity, where each member is co-equal with one another, lives with and for the other, serving, cherishing and honouring the other.

**A Sacramental Community:** *We are a people who highly value the stewardship of all God's creation and the celebration of the sacraments of Baptism and the Lord's Supper.*

We see all of God's creation as holy, reflecting his glory, and therefore "good". We see no distinction between what is sacred and secular, spiritual and physical. The incarnation of Jesus of Nazareth supports that what we see, taste, smell, and touch is indeed good. Being a sacramental community implies the generous stewardship of all of God's gifts (environment, money, family, business, facility, etc.) to the best of our ability and for the glory of God. We are also sacramental

in that we value the celebration of baptism and communion as not mere symbols of deeper spiritual realities, but as God's means of grace to his gathered church. We believe that baptism and The Lord's Supper are frequent practices of the worshipping church, where heaven is particularly close to earth. We enjoy a weekly celebration of the Lord's Supper.

**A Catholic Community:** *We are a people who highly value our relationship with Christ's whole Church, past, present, and future.*

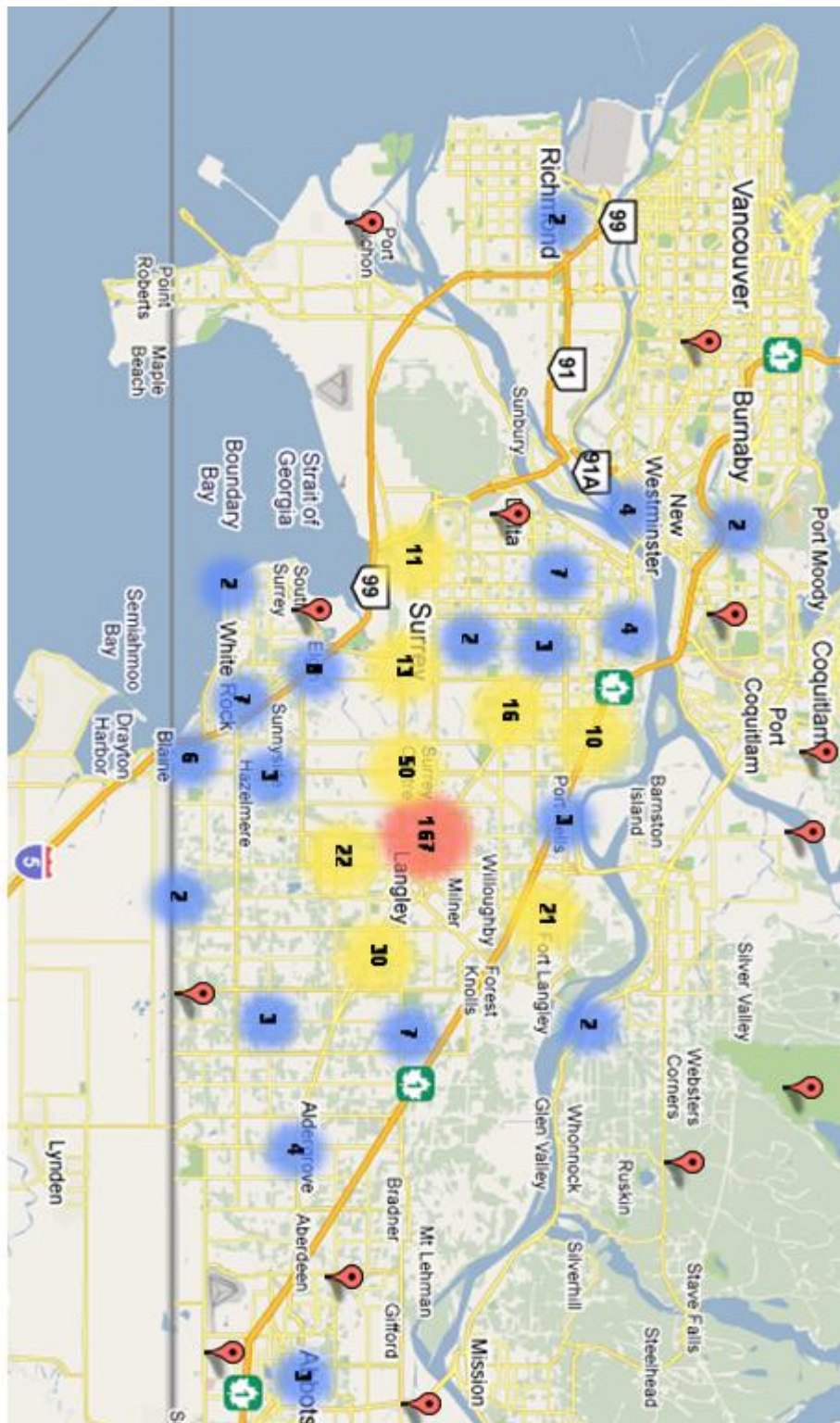
We desire "catholicity" by embracing the work of God's Spirit throughout church history. We see ourselves as a dependant branch of the universal Church which humbly gathers nourishment from the entire tree in all its historical, theological, and cultural diversity. We choose to learn from those who hold differing views than ours in the non-essentials, yet we contend for those bedrock beliefs that the whole church for all time and in every place has considered orthodox. Our ultimate allegiance is to the King and his kingdom. Yet, we believe there is synergy by working in submission and alignment to our own denomination, the Christian and Missionary Alliance. This enables us to be served and coached by others who share our values. These find their greatest expression in discipleship, church planting and global missions. In addition, we seek and welcome opportunities for cross-denominational fellowship and endeavours.

**A Charismatic Community:** *We are a people who desire the fullness of the Holy Spirit to empower us for Christ's mission in the world.*

We are a charismatic community in that we acknowledge the Holy Spirit is present and active in the church today, sovereignly dispensing all His gifts for the building up of the church and the renewing of his world. We value the ministry that God has given each and every member of the body of Christ. We love and serve with eager anticipation of what the Holy Spirit can and will miraculously do as Jesus' kingdom breaks into our midst.

**A Hopeful Community:** *We seek to be a people who live with an expectant eye on Christ's second coming.*

We are encouraged in this present life to persevere with the blessed hope that "when he comes, we shall be like him." Just as "all creation groans eagerly awaiting her redemption", we too acknowledge our weakness and imperfection "until He comes." With Christ we share with those who suffer, and rejoice in the hope and victory of his return when all suffering ends. Living with one eye on his return will keep us from the two extremes of discouragement and arrogance. This hope compels us to be watchful, prayerful, patient and prepared.



Locating the families at Pacific

Figure 10--Appendix 8

Families at Pacific  
<http://www.batchgeo.com/map/8d3f13fdc5bf8c6ef1f8139b51b8d962>  
Screen clipping taken: 20/11/2010, 5:17 P

